



 A SCHAUENBURG HOSE TECHNOLOGY COMPANY

**Flexible Hose, Ducting
and Accessories**
2015-2016 Product Catalog

Flexadux® PV

Flexadux® TR

Flexadux® PU

Flex-Tube®

Flexaust®

Springflex®

Heat-Flex®

Genesis®

Dayflex®

Cuffs & Connectors

Flex-Lok®

Bendway®

Special Applications

Garage Exhaust

Flexaust® has manufactured durable, long lasting, flexible hose and ducting solutions for industrial and commercial applications for 75 years. Our flexible hose products are used in applications involving air, dust, fume and lightweight materials. We offer the largest selection of products including wire reinforced coated fabric hose, wire reinforced plastic hose in regular as well as stretch construction, hand-bendable metal ducting, all plastic wet or dry vacuum hose and blow molded corrugated tubing products.

Flexaust® Product Selection Guide

There are five critical factors in selecting the proper hose and ducting for your application. These are: Size, Temperature, Application, Media and Pressure. The superior strength of Flexaust® hose and ducting makes them suitable for the pressures and velocities normally required for industrial air movement, dust collection, fume control and light bulk material handling.

- S** **SIZE:** Specify the I.D. of the Flexaust hose or duct required.
- T** **TEMPERATURE:** Specify media temperature (°F).
- A** **APPLICATION:** Specify if Air, Fume, Dust and/or Light Weight Materials will be flowing through the hose or duct. See listings to the right.
- M** **MEDIA:** Specify what media is going through the hose or duct.
- P** **PRESSURE:** Specify type of pressure. Positive (psi), Negative (Inches Hg.) and/or Inches w.g.



Air

- Heating or Cooling
- Drying
- Dehumidifying
- Cleaning
- Dust Covers
- Supply
- Connectors
- Air Filter Intakes



Fume

- Laboratory
- Industrial
- Automotive
- Painting
- Welding
- Soldering
- Plating



Dust

- Filtering
- Movement
- Exhaust
- Duct Cleaning
- Textile Fiber Collection
- Vacuum Cleaning
- Lint Collection
- Loading (containment)
- Cutting
- Grinding



Materials

- Light Weight Material Handling
- Shavings
 - Chips
 - Powders
 - Debris
 - Leaf Collection
 - Street Sweeping
 - Lawn Vacuum
 - Slurries
 - Sawdust Collection
 - Drains
 - Packing Popcorn

Solve your hose, ducting, and accessory problems in just 24 hours!

Flexaust's guarantee is to ship your order (250 ft. maximum order) by the end of the next business day or we pay the freight. Look for the 24-hour ship icon throughout the catalog.

Please review the chart below for specific diameters:



Product Line	Product Name	Available Sizes	Length
Flexadux® TR	T-7, T-7W, T-7SR	2", 2.5", 3", 4", 5", 6", 8", 10", 12"	25'
Flexadux® PV	R-2 Blue or Clear	1.5", 2", 2.5", 3", 4", 5", 6", 8", 10", 12"	25'
	R-3 Blue or Clear	2", 3", 4", 5", 6"	25'
Flexadux® PU	Fix-Thane® LD Clear	4", 6", 8"	25'
	Fix-Thane® MD Black or Clear	2", 2.5", 3", 4", 5", 6", 7", 8", 10", 12"	25'
Flex-Tube®	Flex-Tube® PV, Flex-Tube® PU	4", 6", 8"	25'
Flexaust®	CWGP	2", 2.5", 3", 3.5", 4", 5", 6", 7", 8", 10", 12"	25'
	FSP-2	3", 4", 6"	25'
Heat-Flex®	CW-325	3", 4", 6"	25'
	GS	1.25", 1.5", 1.75", 2", 2.5", 3", 4"	12'
Flex-Lok®	Flex-Lok® 550	4", 6", 8"	25'
Springflex®	FSP-5, SD-W	8", 12"	25'
Genesis®	Commercial Gray or Black	1.25", 1.5", 2", 3", 4"	50'

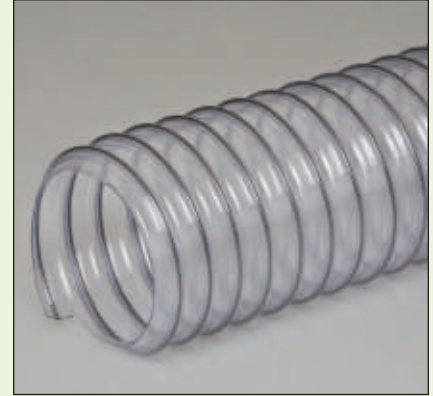
R-2



Size Range (In) 1.25" to 18"
 custom to 24"
 Standard Length (Ft) 25', 50'
14" & above in 25' only
 Standard Colors blue, clear
 Temperature Range (°F) 20° to 160°



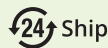
- Light weight PVC hose reinforced with a spring steel wire helix
- Great flexibility with tight bending characteristics
- Good chemical & moisture resistance
- Good compressibility
- Excellent choice for ventilation applications, dust & fume removal
- Blue is listed as UL 94V-0 flame retardant
- Clear is manufactured with FDA acceptable materials
- Wall Thickness = .020"
- Available in metric sizes, consult sales team on pricing & minimums
- Available in an insulation vacuuming version (E-2)



R-3



Size Range (In) 1.25" to 12"
 custom to 24"
 Standard Length (Ft) 25', 50'
14" & above in 25' only
 Standard Colors blue, clear
 Temperature Range (°F) 20° to 160°



- Heavy weight PVC hose reinforced with a coated spring steel wire helix (sizes 14" I.D. & above not available with a coated wire)
- Excellent internal & external abrasion resistance
- Good chemical & moisture resistance
- Excellent choice for ventilation applications, dust & fume removal
- Blue is listed as UL 94V-0 flame retardant
- Clear is manufactured with FDA acceptable materials
- Wall Thickness = .045"
- Available in metric sizes, consult sales team on pricing & minimums



R-4



Size Range (In) 2" to 12"
 Standard Length (Ft) 10', 25', 50'
 Standard Color clear
 Temperature Range (°F) 20° to 160°



- Medium weight PVC hose reinforced with a spring steel wire helix
- Good for positive pressure applications
- Great compressibility
- Construction allows for value packaging by reducing the box size, reducing warehouse space & shipping costs
- Ideal for dust and woodworking applications
- Good chemical & moisture resistance
- Manufactured with FDA acceptable materials
- Wall Thickness = .028"



ADC



Size Range (In) 6" to 18"
 Standard Length (Ft) 25'
 Standard Color clear
 Temperature Range (°F) 20° to 160°



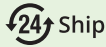
- Very light weight PVC hose reinforced with a spring steel wire helix
- Good for positive pressure applications
- Great compressibility
- Excellent flexibility with tight bending characteristics
- Good chemical & moisture resistance
- Manufactured with FDA acceptable materials
- Wall Thickness = .015"



T-7



Size Range (In) 1.5" to 24"
 Standard Length (Ft) 25', 50'
14" & above in 25' only
 Standard Color black
 Temperature Range (°F) -60° to 275°



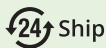
- Medium weight thermoplastic rubber hose reinforced with a spring steel wire helix
- Good abrasion resistance
- Designed for applications with wide temperature ranges
- Great moisture & UV resistance
- Excellent chemical resistance
- Smooth interior assures minimal friction loss & efficient air flow
- Wall Thickness = .030"
- Available in metric sizes, consult sales team on pricing & minimums
- Available with factory-installed 2" black soft cuffs



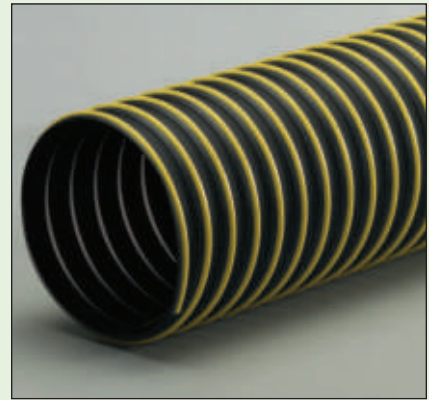
T-7W



Size Range (In) 2" to 24"
 Standard Length (Ft) 25', 50'
14" & above in 25' only
 Standard Color black with yellow wearstrip
 Temperature Range (°F) -60° to 275°



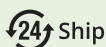
- Medium weight thermoplastic rubber hose reinforced with a spring steel wire helix & external polypropylene wearstrip
- Most general all-purpose hose
- Wearstrip offers additional external abrasion & drag resistance
- Designed for applications with wide temperature ranges
- Great moisture & UV resistance
- Excellent chemical resistance
- Smooth interior assures minimal friction loss & efficient air flow
- Wall Thickness = .030"
- Available in metric sizes, consult sales team on pricing & minimums



T-7SR



Size Range (In) 2" to 12"
 custom to 18"
 Standard Length (Ft) 25', 50'
14" & above in 25' only
 Standard Colors black (blue available)
 Temperature Range (°F) -50° to 285°
 intermittent to 325°



- Thermoplastic rubber coated super reinforced non-woven polyester fabric hose with a spring steel wire helix
- Combines the ozone, UV, weathering & chemical resistance of thermoplastic rubber with the tensile strength & fatigue resistance of fabric hoses
- Offers better tear strength, puncture and abrasion resistance than traditional reinforced woven neoprene & thermoplastic hoses
- Handles higher positive pressures than non-reinforced thermoplastic rubber hoses
- Wall Thickness = .024"
- Available with factory-installed 2" black soft cuffs



T-7 White



Size Range (In) 2" to 12"
 custom to 24"
 Standard Length (Ft) 25', 50'
14" & above in 25' only
 Standard Color white
 Temperature Range (°F) -40° to 250°



- Medium weight thermoplastic rubber hose reinforced with a spring steel wire helix
- Good abrasion resistance
- Designed for applications with wide temperature ranges
- Great moisture & UV resistance
- Excellent chemical resistance
- Smooth interior assures minimal friction loss & efficient air flow
- Wall Thickness = .030"
- Manufactured with FDA acceptable materials



XLT



Size Range (In) 2" to 6"
 Standard Length (Ft) 25'
 Standard Color black
 Temperature Range (°F) -60° to 275°



- Very light weight thermoplastic rubber hose reinforced with a spring steel wire helix
- Excellent compressibility & flexibility
- Most compressible thermoplastic rubber hose in product line
- Designed for applications with wide temperature ranges
- Easy to install in tight spaces
- Recommended for light duty, low pressure applications
- Great moisture & UV resistance
- Excellent chemical resistance
- Wall Thickness = .012"



LT



Size Range (In) 1.5" to 12"
 custom to 16"
 Standard Length (Ft) 25', 50'
 14" & above in 25' only
 Standard Color black
 Temperature Range (°F) -60° to 275°



- Light weight thermoplastic rubber hose reinforced with a spring steel wire helix
- Excellent compressibility & flexibility
- Designed for applications with wide temperature ranges
- Great moisture & UV resistance
- Excellent chemical resistance
- Smooth interior assures minimal friction loss & efficient air flow
- Wall Thickness = .020"
- Available with factory-installed 2" black soft cuffs



HT



Size Range (In) 1.5" to 16"
 Standard Length (Ft) 25', 50'
 14" & above in 25' only
 Standard Color black
 Temperature Range (°F) -60° to 275°



- Heavy weight thermoplastic rubber hose reinforced with a spring steel wire helix
- Suitable for more demanding positive & negative pressure applications
- Designed for applications with wide temperature ranges
- Great moisture & UV resistance
- Excellent chemical resistance
- Smooth interior assures minimal friction loss & efficient air flow
- Wall Thickness = .045"
- Available with factory-installed 2" black soft cuffs



HT-W



Size Range (In) 8" to 12"
 Standard Length (Ft) 25'
 Standard Color black with yellow wearstrip
 Temperature Range (°F) -60° to 275°



- Heavy weight thermoplastic rubber hose reinforced with a spring steel wire helix & external polypropylene wearstrip
- Wearstrip offers additional external abrasion & drag resistance
- Suitable for more demanding positive & negative pressure applications including lawn & leaf collection
- Designed for applications with wide temperature ranges
- Great moisture & UV resistance
- Excellent chemical resistance
- Smooth interior assures minimal friction loss & efficient air flow
- Wall Thickness = .045"



Flx-Thane® LD



Size Range (In) 2" to 18"
 Standard Length (Ft) 25'
 Standard Colors clear, black
 Temperature Range (°F) -65° to 225°

A **F** **D** 


- Light weight polyurethane hose reinforced with a bronze coated spring steel wire helix
- Great compressibility
- Great abrasion resistance
- Superior chemical resistance
- Excellent flexibility
- Designed for applications with wide temperature ranges
- Clear is manufactured with FDA acceptable materials
- Available in metric sizes, consult sales team on pricing & minimums
- Wall Thickness = .020"
- Available with factory-installed 2" black soft cuffs



Flx-Thane® MD



Size Range (In) 2" to 18"
 custom to 24"
 Standard Length (Ft) 25', 50'
 14" & above in 25' only
 Standard Colors black, clear
 Temperature Range (°F) -65° to 225°

M 

- Medium weight polyurethane hose reinforced with a bronze coated spring steel wire helix
- Good compressibility
- Great abrasion resistance & high tear strength
- Superior chemical resistance
- Excellent flexibility
- Designed for applications with wide temperature ranges
- Very good low temperature flexibility
- Clear is manufactured with FDA acceptable materials
- Available in metric sizes, consult sales team on pricing & minimums
- Wall Thickness = .030"
- Available with factory-installed 2" black soft cuffs



Flx-Thane® HD



Size Range (In) 2" to 18"
 custom to 24"
 Standard Length (Ft) 25'
 Standard Colors clear, black
 (translucent blue available)
 Temperature Range (°F) -65° to 225°

M

- Heavy weight polyurethane hose reinforced with a bronze coated spring steel wire helix
- Great abrasion resistance & high tear strength
- Superior chemical resistance
- Excellent flexibility
- Designed for applications with wide temperature ranges
- Ideal for severe service applications
- Very good low temperature flexibility
- Clear is manufactured with FDA acceptable materials
- Available in metric sizes, consult sales team on pricing & minimums
- Wall Thickness = .045"
- Available with factory-installed 2" black soft cuffs



Flx-Thane® VHD



Size Range (In) 4" to 18"
 custom to 24"
 Standard Length (Ft) 25'
 Standard Colors clear, black
 (translucent blue available)
 Temperature Range (°F) -65° to 225°

M

- Very heavy weight polyurethane hose reinforced with a bronze coated spring steel wire helix
- Great abrasion resistance & high tear strength
- Superior chemical resistance
- Excellent flexibility
- Designed for applications with wide temperature ranges
- Ideal for severe service applications
- Very good low temperature flexibility
- Clear is manufactured with FDA acceptable materials
- Available in metric sizes, consult sales team on pricing & minimums
- Wall Thickness = .060"
- Available with factory-installed 2" black soft cuffs



Flx-Thane® SD



Size Range (In) 2" to 12"
 Standard Length (Ft) 25', 50'
14" & above in 25' only
 Standard Colors black, clear
 Temperature Range (°F) -65° to 225°

A **D** **M**

- Medium weight static dissipative polyurethane hose reinforced with a bronze coated spring steel wire helix
- Great abrasion resistance & high tear strength
- Superior chemical resistance & excellent flexibility
- Designed for applications with wide temperature ranges
- Ideal for clean rooms and material plastic processing applications
- Reduces static build-up in material handling applications
- Surface resistance level: 10⁹-10¹⁰ Ohms/Square
- Clear is manufactured with FDA acceptable materials
- Wall Thickness = .030"
- Available with factory-installed 2" clear soft cuffs



Flx-Thane® LD-SD



Size Range (In) 2" to 12"
 Standard Length (Ft) 25'
 Standard Color clear
 Temperature Range (°F) -65° to 225°

A **F** **D**

- Light weight clear static dissipative polyurethane hose reinforced with a bronze coated spring steel wire helix
- Great compressibility & abrasion resistance
- Superior chemical resistance & flexibility
- Designed for applications with wide temperature ranges
- Ideal for light duty woodworking dust collection applications
- Reduces static build-up in material handling applications
- Surface resistivity level: 10⁸-10¹⁰ Ohms/Square
- Manufactured with FDA acceptable materials
- Wall Thickness = .015" (2" ID), .020" (2.5" ID & above)
- Available with factory-installed 2" clear soft cuffs



Flx-Thane® SE



Size Range (In) 2" to 12"
 custom to 24"
 Standard Length (Ft) 25', 50'
14" & above in 25' only
 Standard Color clear
 Temperature Range (°F) -65° to 225°

A **D** **M** **RU**

- Self-extinguishing medium weight polyurethane hose reinforced with a bronze coated spring steel wire helix
- Halogen-free
- Good compressibility
- Great abrasion resistance & high tear strength
- Superior chemical resistance
- Excellent flexibility
- Designed for applications with wide temperature ranges
- Good low temperature flexibility
- Listed as UL 94V-2 flame retardant
- Wall Thickness = .030"



Accessories

Flexadux® Accessories

Metal accessories also available for our Flexaust®, Flex-Tube®, Heat-Flex®, Flex-Lok® & Springflex® hoses. Neoprene coating also available.



Reducers



Transitions



Y's



T's



Branches

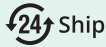


Flexadux® TR & PU Cuffed Ends

Flex-Tube® PV



Size Range (In)75" to 12"
 Standard Length (Ft) 12', 25'
 Available in 100' lengths up to 6" ID
 Standard Color clear with black helix
 Temperature Range (°F) 20° to 160°



- Medium weight co-extruded PVC hose with a rigid external PVC helix
- Economical
- Ultra smooth interior wall assures efficient airflow
- Very flexible & crush resistant
- Spiral co-extruded engineered construction
- Helix acts as a wearstrip
- Wall Thickness = .020" (.75"), .022" (1"), .024" (1.25"), .026" (1.5" to 2"), .030" (2.5" to 3"), .032" (4"), .035" (5" to 8"), .040" (9" to 12")
- OEM lengths & colors available
- Available in a flame retardant version (Flex-Tube® PV-FR)
- Cuffs available



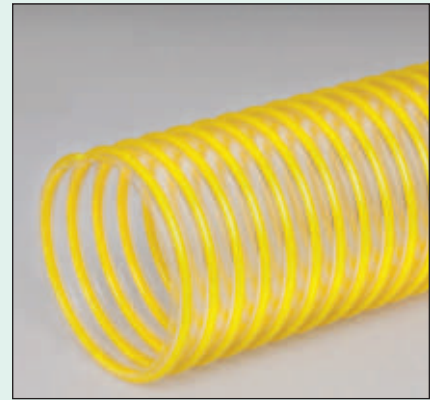
Flex-Tube® PU



Size Range (In)75" to 12"
 Standard Length (Ft) 12', 25'
 Available in 100' lengths up to 6" ID
 Standard Color clear with yellow helix
 Temperature Range (°F) -40° to 200°



- Medium weight co-extruded thermoplastic ether based polyurethane hose with a rigid external ABS helix
- Ultra smooth interior assures efficient airflow
- Great abrasion resistance
- Excellent wear performance
- Puncture & tear resistant, high tensile strength
- Good low temperature flexibility
- Crush resistant
- Spiral co-extruded engineered construction
- Helix acts as a wearstrip
- Excellent hydrolysis & microbial resistance
- Wall Thickness = .020" (.75"), .022" (1"), .025" (1.25"), .026" (1.5"), .030" (1.75"), .032" (2" to 2.5"), .033" (3" to 5"), .035" (6" to 8"), .040" (9" to 12")
- OEM lengths & colors available
- Cuffs available



Flex-Tube® TR



Size Range (In)75" to 10"
 Standard Length (Ft) . . . 25', 50' (10" in 25' only)
 Standard Color black with black helix
 Temperature Range (°F) -60° to 275°
 intermittent to 300°



- Medium weight co-extruded thermoplastic rubber hose with a rigid external polypropylene helix
- Ultra smooth interior wall assures efficient airflow
- Very flexible & crush resistant
- Tight bend radius
- Moisture & chemical resistant
- Designed for applications with wide temperature ranges
- Spiral co-extruded engineered construction
- Helix acts as a wearstrip
- Wall Thickness = .020" (.75"), .022" (1"), .024" (1.25"), .026" (1.5" to 5"), .035" (6" to 10")
- OEM lengths & colors available
- Available in a flame retardant version (Flex-Tube® TR-FR)
- Cuffs available



Flex-Tube® PU 60 HF



Size Range (In) 2" to 8"
 Standard Length (Ft) 25', 50'
 Standard Color clear with blue helix
 Temperature Range (°F) -40° to 200°



- Highly flexible very heavy weight thermoplastic polyether polyurethane hose with a rigid external ABS helix
- Ultra smooth interior assures efficient airflow
- Highly flexible & extremely abrasion resistant
- Excellent wear performance
- Puncture & tear resistant with high tensile strength
- Crush resistant
- Spiral co-extruded engineered construction
- Helix acts as a wearstrip
- Excellent hydrolysis & microbial resistance
- Ideal for grain vac applications
- Wall Thickness = .060"
- OEM lengths & colors available
- Cuffs available



FlexStat®



Size Range (In) 1" to 8"
 Standard Length (Ft) 25', 50'
 Standard Color clear with black helix
 Temperature Range (°F) -40° to 200°

F **D** **M**

- Specially formulated static dissipative polyurethane hose reinforced with a rigid ABS helix and an embedded copper grounding wire
- Extremely flexible with great abrasion resistance vs. heavy walled PVC
- Smooth interior assures minimal friction loss
- Enclosed copper grounding wire reduces static build-up in material handling applications
- Permanent and non-humidity dependent ESD (electrostatic discharge) protection
- Surface Resistivity Level: 10^9 - 10^{10} Ohms/Square
- Ideal for plastic pellet and powder transfer
- Manufactured with FDA acceptable materials
- Wall Thickness = .040"
- Static conductive cuffs available



FlexStat® CR



Size Range (In) 1" to 8"
 Standard Length (Ft) 25', 50'
 Standard Color clear with white helix
 Temperature Range (°F) -40° to 200°

F **D** **M**

- Specially formulated static dissipative polyurethane hose reinforced with a rigid external ABS helix and an embedded copper grounding wire
- Extremely flexible with great abrasion resistance vs. heavy walled PVC
- Smooth interior assures minimal friction loss
- Enclosed copper grounding wire reduces static build-up in material handling applications
- Permanent and non-humidity dependent ESD (electrostatic discharge) protection
- Ideal for clean room and pharmaceutical applications
- Surface Resistivity Level: 10^9 - 10^{10} Ohms/Square
- Manufactured with FDA acceptable materials
- Wall Thickness = .040"
- Static conductive cuffs available



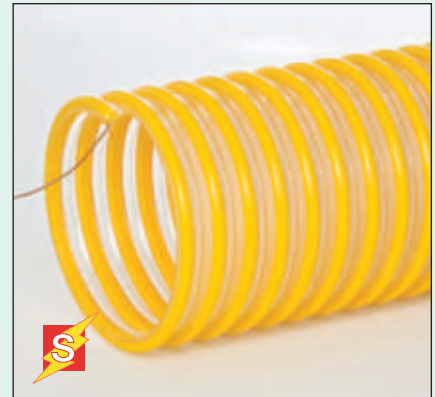
FlexStat® 60



Size Range (In) 4" to 8"
 Standard Length (Ft) 25', 50'
 Standard Color clear with yellow helix
 Temperature Range (°F) -40° to 200°

D **M**

- Specially formulated static dissipative polyurethane hose reinforced with a rigid external ABS helix and an embedded copper grounding wire
- Extreme abrasion resistance & handles high vacuum
- Smooth interior assures minimal friction loss
- Enclosed copper grounding wire reduces static build-up in material handling applications
- Permanent and non-humidity dependent ESD (electrostatic discharge) protection
- Ideal for severe service applications, hopper loading systems & railcar loading/unloading
- Surface Resistivity Level: 10^9 - 10^{10} Ohms/Square
- Wall Thickness = .060"
- Cuffs available for 4" ID



Accessories

Flex-Tube® Accessories

Also available for our Flexadux®, Flexaust®, Heat-Flex®, Flex-Lok® (excluding Screw Clamps) and Springflex® hoses.



Screw Cuffs



Bridge Clamps



J-Locks



Connectors



Pin-Locks



Latch-Locks

CWGP



Size Range (In) 1" to 24"
 custom to 60"
 Standard Length (Ft) 25'
 Standard Color black
 Temperature Range (°F) -40° to 250°



- Double-ply neoprene coated polyester fabric hose reinforced with a spring steel wire helix
- Good crush resistance & tensile strength
- Neoprene coating offers excellent abrasion & chemical resistance
- Good flexibility
- More durable than double-ply cotton hoses
- Listed as UL 94V-0 flame retardant
- Additional coatings available for better abrasion &/or chemical resistance
- Available in a static conductive version (Conduct-O-Flex)
- Available in metric sizes, consult sales team on pricing & minimums



CWC-W



Size Range (In) 3" to 14"
 custom to 60"
 Standard Length (Ft) 25'
 Standard Color black with yellow wearstrip
 Temperature Range (°F) -40° to 250°



- Double-ply neoprene coated polyester fabric hose reinforced with a spring steel wire helix & external PVC coated polyester wearstrip
- Wearstrip offers additional external abrasion & drag resistance
- Good crush resistance & tensile strength
- Neoprene coating offers excellent abrasion & chemical resistance
- Listed as UL 94V-0 flame retardant
- Additional coatings available for better abrasion &/or chemical resistance



CWS



Size Range (In) 1.5" to 12"
 custom to 20"
 Standard Length (Ft) 25'
 Standard Color black
 Temperature Range (°F) -65° to 250°



- Single-ply neoprene coated polyester fabric hose reinforced with a spring steel wire helix
- Recommended for light duty, low pressure applications
- Extremely flexible
- Neoprene coating offers excellent abrasion & chemical resistance
- Designed for applications with wide temperature ranges
- Listed as UL 94V-0 flame retardant
- Additional coatings available for better abrasion &/or chemical resistance



CWY



Size Range (In) 4" to 24"
 custom to 60"
 Standard Length (Ft) 25'
 Standard Color black
 Temperature Range (°F) -40° to 250°



- Double-ply neoprene coated nylon fabric hose reinforced with a spring steel wire helix
- Neoprene & nylon construction offers excellent abrasion resistance & superior flex life
- Handles both positive & negative pressure
- Excellent tensile strength
- Available with an external PVC coated polyester wearstrip (CWY-W)
- Additional coatings available for better abrasion &/or chemical resistance



White



Size Range (In) 1.5" to 16"
 custom to 24"
 Standard Length (Ft) 25'
 Standard Color white
 Temperature Range (°F) -20° to 325°

- Double-ply acrylic coated polyester fabric hose reinforced with a spring steel wire helix
- Efficient flow characteristics
- Designed for applications with wide temperature ranges
- Good abrasion resistance
- Ideal for clean room applications
- Manufactured with FDA acceptable materials



A **F** **D** **M**

FSP-1



Size Range (In) 3" to 12"
 Standard Length (Ft) 25'
 Standard Color .. black with orange wearstrip
 Temperature Range (°F) -20° to 180°

- Single-ply PVC vinyl coated polyester fabric hose reinforced with a spring steel wire helix & external PVC wearstrip
- Wearstrip offers additional external abrasion & drag resistance
- Low friction loss
- Great chemical & moisture resistance
- Listed as UL 94V-0 flame retardant
- Other wearstrip colors available
- Available without a wearstrip for a more economical option
- Available in metric sizes, consult sales team on pricing & minimums



A **F** **RU**

FSP-2



Size Range (In) 3" to 12"
 Standard Length (Ft) 25'
 Standard Color ..black with orange wearstrip
 Temperature Range (°F) -20° to 180°

- Double-ply PVC vinyl coated polyester fabric hose reinforced with a spring steel wire helix & external PVC wearstrip
- Wearstrip offers additional external abrasion & drag resistance
- Great moisture, mildew & chemical resistance
- Low friction loss
- Listed as UL 94V-0 flame retardant
- Other wearstrip colors available
- Available in a heavy duty bridge construction (FSP Bridge)



D **RU** Ship

Accessories

Flexaust® End Finishes

Also available for our Heat-Flex® (excluding Reduced Cuff & Felt Flange) & Springflex® hoses.



Enlarged Cuff



Steel Flange



Fabric Cuff



Reduced Cuff



Felt Flange

FSP-5



Size Range (In) 4" to 24"
 custom to 48"
 Standard Length (Ft) 25'
 Standard Color yellow with black wearstrip
 Temperature Range (°F) -20° to 180°



- Single-ply PVC vinyl coated polyester fabric hose reinforced with a spring steel wire helix & external PVC wearstrip
- Lightweight duct for blower applications
- Great compressibility with an 11:1 compressibility ratio
- Retractability allows for convenient storage & easy transport in a fraction of its fully extended length
- Wearstrip offers additional external abrasion & drag resistance
- Listed as UL 94V-0 flame retardant
- Manufactured with materials that meet NFPA 701 standards
- Shown with optional cuff



SD-W



Size Range (In) 4" to 24"
 custom to 60"
 Standard Length (Ft) 25'
 Standard Color yellow with black wearstrip
 Temperature Range (°F) -65° to 250°



- Single-ply neoprene coated polyester fabric hose reinforced with a spring steel wire helix & external PVC wearstrip
- Ideal for moving large volumes of air in portable or permanent ventilation/exhaust systems
- Wearstrip offers additional external abrasion & drag resistance
- Great compressibility
- Retractability allows for convenient storage & easy transport in a fraction of its fully extended length
- Listed as UL 94V-0 flame retardant
- Available in a self-retracting version (STO), 4" to 8" only
- Shown with optional cuff



SD



Size Range (In) 4" to 24"
 custom to 60"
 Standard Length (Ft) 25'
 Standard Color yellow
 Temperature Range (°F) -65° to 250°



- Single-ply neoprene coated polyester fabric hose reinforced with a spring steel wire helix
- Ideal for moving large volumes of air in portable or permanent ventilation/exhaust systems
- Great compressibility
- Retractability allows for convenient storage & easy transport in a fraction of its fully extended length
- Listed as UL 94V-0 flame retardant
- Shown with optional cuff



Accessories

Springflex® End Finishes

Flexaust® offers a variety of end finishes including several types of fabric cuffs for the Springflex® product line. Assembling hoses with various types of required end finishes is another way in which Flexaust® services its customers and reduces costs.



Sewn Cuff

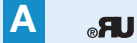


Standard/Enclosed Belted Cuff

AWP-W



Size Range (In) 8" to 24"
 custom to 48"
 Standard Length (Ft) 25'
 Standard Color . . . yellow with black wearstrip
 Temperature Range (°F) -20° to 325°



- Single-ply acrylic coated polyester fabric hose reinforced with a spring steel wire helix and external PVC wearstrip
- Ideal for moving large volumes of air in portable or permanent ventilation/exhaust systems
- Wearstrip offers additional external abrasion & drag resistance
- Great compressibility
- Retractability allows for convenient storage & easy transport in a fraction of its fully extended length
- Listed as UL 94V-0 flame retardant
- Shown with optional cuff



Arctic Duct 3



Size Range (In) 4" to 24"
 Standard Length (Ft) 25'
 Standard Color . . . yellow with black wearstrip
 Temperature Range (°F) -20° to 180°



- Two single-ply PVC vinyl coated polyester fabric plies protecting an insulation barrier reinforced with a spring steel wire helix & external PVC wearstrip
- Insulation; 1-inch fiberglass insulation (R-Value=4)
- Ideal use for both permanent & mobile air conditioning applications
- PVC material resists ozone, UV rays & moisture
- Compressibility allows for convenient storage
- Wearstrip offers additional external abrasion & drag resistance
- Other Arctic Duct constructions available
- Manufactured with flame retardant materials
- Made with sewn cuff on each end



Arctic Duct U



Size Range (In) 4" to 20"
 custom to 48"
 Standard Length (Ft) made to order
 Standard Color . . . yellow with black wearstrip
 Temperature Range (°F) -40° to 250°



- Two single-ply neoprene coated polyester fabric plies protecting an insulation barrier reinforced with a spring steel wire helix & external PVC coated polyester wearstrip
- Insulation; 1-inch fiberglass insulation (R-Value=4)
- Good for air handling applications
- High tensile strength
- Wearstrip offers additional external abrasion & drag resistance
- Compressibility allows for convenient storage
- Designed for applications with wide temperature ranges
- Manufactured with flame retardant materials
- Made with sewn cuff on each end



Funnel Cuff



Belt Loop & Pull Tabs



Wire Rope/Nylon Ring



Sto-Sack®

GS



Size Range (In)75" to 12"
 Standard Length (Ft) 12'
 Standard Color iron oxide red
 Temperature Range (°F) -65° to 550°
 intermittent to 600°

- Double-ply silicone coated fiberglass fabric hose reinforced with a spring steel wire helix & external filament fiberglass cord
- Suited for high temperature air handling applications
- The narrow pitch allows for tight bending radius while maintaining a smooth air flow
- Ideal for plastic processing applications
- Non-kinking
- Resistant to many oils & solvents, ozone, water, fungus & alkalis
- Not recommended for continuous flexing



A **F**

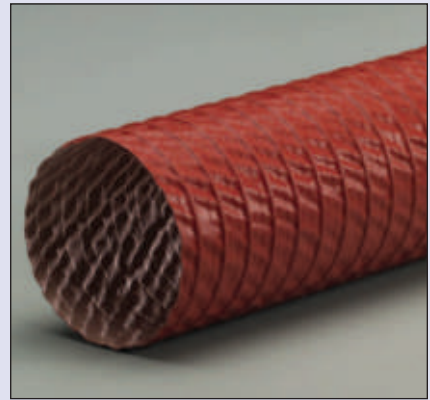


CWGS



Size Range (In) 2" to 12"
 Standard Length (Ft) 25'
 Standard Color iron oxide red
 Temperature Range (°F) -65° to 550°

- Single-ply silicone coated fiberglass fabric hose reinforced with a spring steel wire helix
- Light weight & flexible
- Available in longer lengths than traditional mandrel-built hose
- Resistant to many oils & solvents, ozone, water, fungus & alkalis
- Not recommended for continuous flexing



A **F**

BDS



Size Range (In) 1" to 12"
 Standard Length (Ft) 12'
 Standard Color iron oxide red
 Temperature Range (°F) -65° to 500°

- Single-ply silicone coated fiberglass fabric hose reinforced with a spring steel wire helix & external filament fiberglass cord
- Suited for high temperature air handling applications
- The narrow pitch allows for tight bending radius while maintaining a smooth air flow
- Non-kinking
- Resistant to many oils & solvents, ozone, water, fungus & alkalis
- Not recommended for continuous flexing



A **F**

CW-325

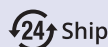


Size Range (In) 2" to 12"
 custom to 16"
 Standard Length (Ft) 25'
 Standard Color black
 Temperature Range (°F) -20° to 325°

- Single-ply acrylic coated polyester fabric hose reinforced with a spring steel wire helix
- Ideal for air & fume handling applications
- Excellent choice for overhead vehicle exhaust systems
- Light weight & flexible
- Listed as UL 94V-0 flame retardant
- Available with an external PVC wearstrip (CW-325-W)



A **F** **RU**



NS



Size Range (In) 1" to 12"
 Standard Length (Ft) 12'
 Standard Color iron oxide red inner layer
 black outer layer
 Temperature Range (°F) -65° to 550°



- Double-ply fabric hose with a silicone coated fiberglass inner layer & a silicone coated Nomex® outer layer reinforced with a spring steel wire helix & external filament fiberglass cord
- Nomex® material increases flex life & abrasion resistance
- Suited for high temperature air handling applications
- The narrow pitch allows for tight bending radius while maintaining a smooth air flow
- Ideal for applications where constant flexing is involved
- Non-kinking
- Resistant to many oils & solvents, ozone, water, fungus & alkalis



GN



Size Range (In) 1" to 12"
 Standard Length (Ft) 12'
 Standard Color black
 Temperature Range (°F) -40° to 300°



- Double-ply neoprene coated fiberglass fabric hose reinforced with a spring steel wire helix & external filament fiberglass cord
- Offers higher temperature characteristics than traditional neoprene hoses
- The narrow pitch allows for tight bending radius while maintaining a smooth air flow
- Non-kinking
- Not recommended for continuous flexing



Flex-Vest®



Size Range (In) 1" to 6"
 custom to 8"
 Standard Length (Ft) 12'
 custom to 25'
 Standard Color iron oxide red inner layer
 black outer layer
 Temperature Range (°F) -65° to 550° inner layer
 intermittent to 600°
 -40° to 250° outer layer



- Inner Layer; Double-ply silicone coated fiberglass fabric hose reinforced with a spring steel wire helix
- Outer layer; Single-ply neoprene coated polyester fabric hose reinforced with a spring steel wire helix
- Insulation; 1-inch fiberglass insulation (R Value = 4)
- Insulated dryer hose
- Combines flexibility with minimal heat loss
- Suited for air handling applications at low positive & low negative pressures
- Good flexibility
- Excellent chemical resistance



Raceflex®



Size Range (In) 1.5" to 3"
 custom to 8"
 Standard Length (Ft) 12'
 Standard Color silver
 Temperature Range (°F) -65° to 625°



- Light weight laminate of fiberglass & vacuum metallized polyester film
- Heat reflective to 625°F
- Light weight & flexible
- Smooth bend radius
- 2.64-inch compression per foot of hose
- Designed for brake ducting & ventilation of drive compartments in racecars



STM



Size Range (In) 1.5", 2"
 Standard Length (Ft) 25', 50'
 Standard Colors orange, blue
 Temperature Range (°F) -40° to 160°



- Polyethylene copolymer hose reinforced with an integral polyethylene helix
- Double profile I-Helix construction for easy movement on surfaces
- Ideal for both truck-mounted & portable carpet cleaning units
- Very flexible
- Superior abrasion resistance
- Crush resistant
- Designed to resist corrosion caused by the combination of hot water & chemical concentration of detergents
- All sizes handle a full vacuum
- Smooth interior assures efficient air flow
- Made with factory-installed polyweld cuffs



Commercial



Size Range (In) 1.25", 1.5", 2", 2.5", 3", 4"
 Standard Length (Ft) 25', 50'
 Standard Colors gray, black
 Temperature Range (°F) -40° to 140°



- Polyethylene copolymer hose reinforced with an integral polyethylene helix
- Double profile I-Helix construction for easy movement on surfaces
- For industrial & commercial vacuum applications
- Crush resistant
- Excellent flexing characteristics
- Superior abrasion resistance
- Smooth interior assures efficient air flow
- All sizes handle a full vacuum
- Cuffs available



Flx Plus



Size Range (In) 1", 1.25", 1.5", 2"
 2.5", 3", 3.5", 4"
 Standard Length (Ft) 25', 50'
 Standard Color gray
 Temperature Range (°F) -40° to 140°



- Polyethylene copolymer hose reinforced with an integral polyethylene helix
- Light weight & flexible even at low temperatures
- Tight bending characteristics
- High abrasion resistance
- Wet or dry vacuum in car wash, commercial & industrial applications
- Crush resistant
- Smooth interior assures efficient air flow
- Very good chemical resistance
- Cuffs available



StatPath® Plus



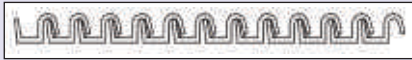
Size Range (In) 1", 1.25", 1.5", 2"
 Standard Length (Ft) 25', 50'
 Standard Color black with yellow skimcoat
 Temperature Range (°F) -40° to 140°



- Light weight polyethylene conductive copolymer hose with a non-marking skimcoat reinforced with an integral polyethylene helix
- Conductive
- Surface Resistivity Level: 10³-10⁵ Ohms/Square
- Smooth interior assures efficient air flow
- Ideal for industrial vacuum & light bulk material applications where static may be an issue
- Superior external abrasion resistance
- Crush resistant
- Conductive cuffs & custom colors available
- Available without skimcoat (StatPath®)



Uni-Loop



Size Range (In) 1", 1.25", 1.5", 2"
 Standard Length (Ft) 25', 50'
 Standard Color gray
 Temperature Range (°F) -40° to 140°



- Light weight polyethylene copolymer hose reinforced with an integral polyethylene helix
- Smooth interior assures efficient air flow
- Superior external abrasion resistance
- Good flexibility with tight bending characteristics
- Crush resistant
- Ideal for use in light weight vacuum applications & as a drain hose
- Suitable for conduit for wiring
- Meets IAPMO compliance
- Cuffs available
- Available in a high temperature version (Uni-Loop HT)



ULT



Size Range (In) 1", 1.25", 1.5", 2"
 Standard Length (Ft) 25', 50'
 Standard Color platinum
 Temperature Range (°F) -40° to 140°



- Light weight premium grade polyethylene copolymer hose reinforced with an integral polyethylene helix
- Smooth interior assures very efficient air flow
- Superior external abrasion resistance
- Great flex life for long lasting hose life in applications
- Crush resistant
- Ideal for use in light weight vacuum applications & as a drain hose
- Very durable & flexible in hot & cold applications – meets ASTM 595
- Withstands severe twisting with nearly 100% bounce-back
- Cuffs available



DPZ



Size Range (In) 1.25", 1.5", 2"
 Standard Length (Ft) 25', 50'
 Standard Color gray
 Temperature Range (°F) -40° to 140°



- Light weight polyethylene copolymer hose reinforced with an integral polyethylene helix
- Smooth interior assures efficient air flow
- Light weight & flexible even at low temperatures
- Superior external abrasion resistance
- Ideal for wet/dry vacuum in car wash, commercial & industrial applications
- Very good chemical resistance
- Crush resistant
- Cuffs & custom colors available



Industrial Shop Vacuum Clean-Up Kits

Clean-up kits offer a turnkey solution for general industrial clean-up needs. Flexaust® offers a variety of kit solutions depending on your cleaning environment. Clean-up kits can also be customized to your specifications and needs. *Please consult with inside sales.*

Industrial MRO General Pick-Up Kit

- 1.5" x 15' StatPath® Plus (blue)
- 1.5" Swivel Cuff
- 2.25" Adapter
- 4" Utility Tool
- 11" Crevice Tool



Commercial MRO General Pick-Up Kit

- 1.5" x 15' Fix Plus (orange)
- 1.5" Swivel Cuff
- 2.25" Adapter
- 4" Utility Tool
- 11" Crevice Tool



Mark 2®



Size Range (In) 1.5", 2", 2.5", 3", 3.5", 4"
 Standard Length (Ft) 25', 50'
 Standard Color clear
 Temperature Range (°F) -40° to 140°



- Medium weight polyethylene hose reinforced with a translucent integral polyethylene helix
- Ideal for insulation blowing applications
- Easy to handle
- Translucent walls offer easy monitoring of material flow & blockage
- Convoluted interior design creates efficient air flow that aerates insulation materials & increases machine efficiency with regard to coverage & density
- Crush resistant
- Manufactured with FDA acceptable materials
- Available with different color helixes to match OEM equipment



Tiger Tail®



Size Range (In) 1.5", 2", 3", 4"
 Standard Length (Ft) 25', 50'
 Standard Color yellow and black
 Temperature Range (°F) -40° to 140°



- Rugged polyethylene copolymer hose reinforced with an integral polyethylene helix
- Improved polymer formula & 25% thicker to extend life
- Double helix design allows for superior flexibility & durability
- Ideal for waste evacuation, septic pumping & sewer cleaning
- Superior abrasion, better crush resistance & resists kinking
- All sizes handle a full vacuum
- Made with factory-installed leak proof polyweld cuffs
- Threaded replacement screw cuffs & specially formulated replacement hose glue available



GPE



Size Range (In) 2", 2.5", 3", 4"
 Standard Length (Ft) 25', 50'
 Standard Color black
 Temperature Range (°F) -40° to 140°



- Light weight polyethylene hose reinforced with an integral polyethylene helix
- Suited for low pressure air movement & fume extraction
- Excellent for light vacuum applications
- Light weight & very flexible
- Economical choice for woodworking & dust collection applications
- Moderate abrasion resistance
- Crush resistant



DAYFLEX®

Pliaduct®



Inside Diameter (In) 2" to 12"
 Standard Length (Ft) 25' (2"-6"), 10' (8"-12")
 Standard Color gray
 Temperature Range (°F) -10° to 150°



- 100% rigid self-supporting PVC material with a ribbon-lock construction
- Diameter is adjustable by hand & can be reduced or expanded by approximately 25% of original I.D.
- Chemical resistant
- May be shaped & reshaped & spliced together without special tools
- Excellent for either temporary or permanent installation
- Manufactured with flame retardant materials



MG-V



Size Range (In)75" to 2"
 Standard Length (Ft) 50'
 Standard Color gray
 Temperature Range (°F) -10° to 160°

- PVC hose reinforced with a vinyl coated spring steel wire helix
- Light weight & flexible
- Good chemical resistance
- Popular choice for floor care industry & general industrial vacuum applications
- Cuffs available
- Other colors available
- Available in a stretch version (MG-S)



A F D M

MG-U



Size Range (In)75" to 2"
 Standard Length (Ft) 50'
 Standard Color black
 Temperature Range (°F) -60° to 160°

- Elastomer polyurethane hose reinforced with a vinyl coated spring steel wire helix
- Light weight & flexible
- Good chemical resistance
- Excellent abrasion resistance
- Cuffs available
- Other colors available



A F D M

Saniflex®



Size Range (In)75" to 2"
 Standard Length (Ft) 50'
 Standard Color natural
 Temperature Range (°F) -20° to 180°

- Plastic helix supported PVC tape hose
- Very smooth inner surface assures minimal friction loss & efficient air flow
- Light weight & flexible
- Can also be compounded in polyurethane & thermoplastic rubber elastomer materials
- Ideal as a potable water hose in RV applications
- Meets IAPMO compliance



M

DFD-T



Size Range (In) 1" to 4"
 Standard Length (Ft) 25', 50'
 Standard Color black
 Temperature Range (°F) -40° to 225°

- Light weight thermoplastic rubber hose reinforced with an internal polypropylene helix
- Pliable helix can be formed to fit various applications
- Flexible, crush resistant & compressible
- Meets FMVSS 302 flame standards
- Great choice for heater/defroster & ventilation applications
- Can also be manufactured with PVC materials



A

Accessories & End Finishes for Flexaust® Vacuum Hose Product Line

	Commercial	Flx Plus	Uni-Loop	ULT	DPZ	StatPath®	StatPath® Plus	MG-V	MG-U	FlexStat®
Standard Screw Cuffs										
Screw Cuff .75" Gray 075EW								•	•	
Screw Cuff 1" Gray 03100754								•	•	
Screw Cuff 1" Gray 100EW								•	•	
Screw Cuff 1" Black 100EB			•							
Screw Cuff 1.25" Gray 03100201	•	•	•	•	•					
Screw Cuff 1.25" Gray 125E		•	•	•	•					
Screw Cuff 1.25" Gray 03100755								•	•	
Screw Cuff 1.25" Gray 125EW								•	•	
Screw Cuff 1.25" Black 125EWBK								•	•	
Screw Cuff 1.25" Black 03100202	•	•	•	•	•					
Screw Cuff 1.25" Black 125EBK		•	•	•	•					
Screw Cuff 1.5" Gray 03100900	•	•	•	•	•					
Screw Cuff 1.5" Gray 150EF			•		•					
Screw Cuff 1.5" Gray 03100469								•	•	
Screw Cuff 1.5" Gray 150EW								•	•	
Screw Cuff 1.5" Black 03100901	•	•	•	•	•					
Screw Cuff 1.5" Black 150EFBK			•		•					
Screw Cuff 1.5" Gray 150EO	•	•								
Screw Cuff 1.5" Black 150EOBK	•	•								
Screw Cuff 1.5" Black 150EWBK78								•	•	
Screw Cuff 1.5" White 03100902	•	•	•	•	•					
Screw Cuff 1.5" White 150EWH								•	•	
Screw Cuff 2" Gray 03100380	•	•	•	•						
Screw Cuff 2" Gray 03100384					•					
Screw Cuff 2" Gray 200E	•	•	•	•	•					
Screw Cuff 2" Gray 03100615								•	•	
Screw Cuff 2" Black 03100381	•	•	•	•						
Screw Cuff 2" Black 200EBK	•	•	•	•	•					
Screw Cuff 2" White 03100383	•	•	•	•						
Screw Cuff 2.5" Gray 03100800	•									
Screw Cuff 3" Gray 03100801	•									
Screw Cuff 4" Gray 03100802	•									
Conductive Screw Cuffs										
Conductive Screw Cuff 1" Black 100EBSC						•	•			
Conductive Screw Cuff 1.25" Black 03100207						•	•			
Conductive Screw Cuff 1.25" Black 125EBKSC						•	•			
Conductive Screw Cuff 1.5" Black 03100907						•				
Conductive Screw Cuff 1.5" Black 03100797										•
Conductive Screw Cuff 1.5" Black 150EFBKSC						•	•			
Conductive Screw Cuff 2" Black 03100387						•	•			
Conductive Screw Cuff 2" Black 03100798										•
Conductive Screw Cuff 2" Black 200EBKSC						•	•			
Enlarger Screw Cuffs										
Enlarger Screw Cuff 1" to 1.5" Black 10015EB			•							
Enlarger Screw Cuff 1.25" to 1.5" Gray 12515E		•	•	•	•					
Enlarger Screw Cuff 1.25" to 1.5" Gray 12515EW								•	•	
Enlarger Screw Cuff 1.25" to 1.5" Black 12515EWBK								•	•	

CUFFS & CONNECTORS

A
AIR

F
FUME

D
DUST

M
MATERIAL

	Commercial	Fix Plus	Uni-Loop	ULT	DPZ	StatPath®	StatPath® Plus	MG-V	MG-U	FlexStat®
Enlarger Screw Cuff 1.5" to 1.75" Gray 150ESU			●	●	●					
Enlarger Screw Cuff 1.5" to 2" Gray 03100280	●	●	●	●	●					
Enlarger Screw Cuff 1.5" to 2" Gray 15200E		●	●	●	●					
Enlarger Screw Cuff 1.5" to 2" Gray 15200EW								●	●	
Enlarger Screw Cuff 1.5" to 2" Black 15200EBK		●	●	●	●					
Conductive Enlarger Screw Cuffs										
Conductive Enlarger Screw Cuff 1" to 1.25" Black 10012EBKSC						●	●			
Conductive Enlarger Screw Cuff 1.25" to 1.5" Black 12515EBKSC						●	●			
Conductive Enlarger Screw Cuff 1.5" to 2" Black 15200EBKSC						●	●			
Reducer Screw Cuffs										
Reducer Screw Cuff 1.5" to 1.25" Gray 15125E		●	●	●	●					
Reducer Screw Cuff 1.5" to 1.25" Gray 15125EW								●	●	
Reducer Screw Cuff 1.5" to 1.25" Black 15125EBK		●	●	●	●					
Reducer Screw Cuff 2" to 1.5" Gray 03100400	●	●	●	●						
Reducer Screw Cuff 2" to 1.5" Gray 20150E	●	●	●	●	●					
Standard Swivel Cuffs										
Swivel Cuff 1.25" Gray 03100430	●	●	●	●	●					
Swivel Cuff 1.25" Black 125ESBK		●	●	●	●					
Swivel Cuff 1.25" Black 125ESWBK								●	●	
Swivel Cuff 1.5" Gray 03100440	●	●	●	●	●					
Swivel Cuff 1.5" Gray 150ESF		●	●	●	●					
Swivel Cuff 1.5" Black 150ESFBK		●	●	●	●					
Swivel Cuff 1.5" Black 150ESWBK								●	●	
Swivel Cuff 2" Gray 03100450	●	●	●	●						
Swivel Cuff 2" Gray 200ES	●	●	●	●	●					
Conductive Swivel Cuffs										
Conductive Swivel Cuff 1.5" Black 03100957						●				
Conductive Swivel Cuff 1.5" Black 150ESFBKSC						●	●			
Conductive Swivel Cuff 2" Black 03100956						●	●			
Conductive Swivel Cuff 2" Black 200ESBKSC						●	●			
Reducer Swivel Cuffs										
Reducer Swivel Cuff 2" to 1.5" Gray 03100455	●	●	●	●						
Double Threaded Connectors										
Connector 1.25" Gray 03100180	●	●	●	●	●					
Connector 1.5" Gray 03100240	●	●	●	●	●					
Connector 2" Gray 03100360	●	●	●	●						
Specialty Cuffs & Connectors										
Conductive Enlarger Swivel Connector 1" to 1.25" Black 10012CSBKSC						●	●			
Central Vac Screw Cuff 1.25" Black 125EBANDBK		●	●	●	●					
45° Screw Cuff Nozzle 1.5" Gray 03100100	●	●	●	●	●					
45° Screw Cuff Nozzle 2" Gray 03100160	●	●	●	●						
30° Reducer Screw Cuff Nozzle 2" to 1.5" Gray 03100140	●	●	●	●						

Flex-Lok® 550



Size Range (In) 4" to 18"
 custom to 20"
 Standard Length (Ft) 25'
 Standard Color silver
 Temperature Range (°F) -65° to 550°



- Single-ply silicone coated fiberglass fabric hose mechanically crimped in a continuous process
- Fabric is locked around a coated steel wire by a metal strip formed into a clip
- Metal strip acts as a wearstrip & offers outstanding external abrasion resistance
- Extremely flexible & compressible
- Manufactured with flame retardant materials
- Ideal for medium temperature heater & floor exhaust applications
- Available with a non-marking TPR rubber clip cover to protect the helix & the equipment that is attached to the hose



Flex-Lok® 600



Size Range (In) 4" to 12"
 custom to 20"
 Standard Length (Ft) 25'
 Standard Color silver
 Temperature Range (°F) -65° to 600°



- Double-ply construction silicone coated fiberglass fabric hose with a heat-resistant fiberglass liner mechanically crimped in a continuous process
- Fabric is locked around a coated steel wire by a metal strip formed into a clip
- Metal strip acts as a wearstrip & offers outstanding external abrasion resistance
- Extremely flexible & compressible
- Manufactured with flame retardant materials
- Ideal for medium temperature fume control & vehicle exhaust applications
- Available with a non-marking TPR clip cover to protect the helix & the equipment that is attached to the hose



Flex-Lok® 1050



Size Range (In) 4" to 18"
 custom to 20"
 Standard Length (Ft) 25'
 Standard Color silver with a silver liner
 Temperature Range (°F) -65° to 1050°



- Double-ply construction aluminum coated fiberglass fabric hose with a heat-resistant fiberglass liner mechanically crimped in a continuous process
- Fabric is locked around a coated steel wire by a metal strip formed into a clip
- Metal strip acts as a wearstrip & offers outstanding external abrasion resistance
- Extremely flexible & compressible with good flex characteristics
- Fiberglass liner increases tensile strength for a longer life cycle
- Ideal for engine & dynamometer testing, reel, drop systems & paper mill drying applications



Flex-Lok® TCF



Size Range (In) 4" to 18"
 custom to 20"
 Standard Length (Ft) 25'
 Standard Color black with a silver liner
 Temperature Range (°F) -60° to 600°



- Double-ply construction Teflon® fabric hose with a heat-resistant fiberglass liner mechanically crimped in a continuous process
- Fabric is locked around a coated steel wire by a metal strip formed into a clip
- Metal strip acts as a wearstrip & offers outstanding external abrasion resistance
- Excellent fatigue resistance & good flex characteristics
- Sealed exterior prevents the escape of dangerous fumes
- Ideal for reel, drop systems & venting many of today's harsh chemicals
- Available with a non-marking TPR clip cover to protect the helix & the equipment that is attached to the hose



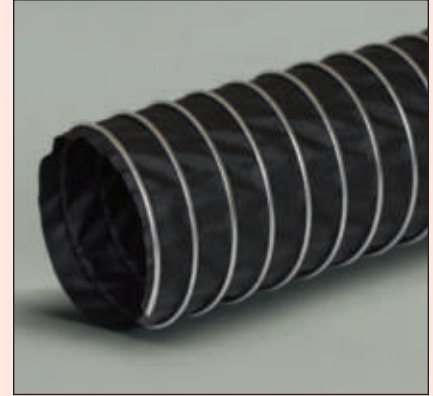
Flex-Lok® 300



Size Range (In) 4" to 18"
 custom to 20"
 Standard Length (Ft) 25'
 Standard Color black
 Temperature Range (°F) -65° to 300°



- Single-ply neoprene coated polyester fabric hose mechanically crimped in a continuous process
- Fabric is locked around a coated steel wire by a metal strip formed into a clip
- Metal strip acts as a wearstrip & offers outstanding external abrasion resistance
- Extremely flexible & compressible
- Manufactured with flame retardant materials
- Ideal for low temperature fume control applications
- Available with a non-marking thermoplastic rubber clip cover to protect the helix & the equipment that is attached to the hose (Flex-Lok® 300W)



Flex-Lok® 570



Size Range (In) 4" to 12"
 custom to 20"
 Standard Length (Ft) 25'
 Standard Color green outer layer
 black inner layer
 Temperature Range (°F) -40° to 570°



- Single-ply Para-Aramid fabric hose mechanically crimped in a continuous process
- Fabric is locked around a coated steel wire by a metal strip formed into a clip
- Metal strip acts as a wearstrip & offers outstanding external abrasion resistance
- Excellent compressibility, puncture resistance & tensile strength
- Excellent fatigue resistance & good flex characteristics
- Ideal for medium temperature, high flex fume venting applications
- Available with a non-marking TPR clip cover to protect the helix & the equipment that is attached to the hose



Flex-Lok® 750



Size Range (In) 4" to 18"
 custom to 20"
 Standard Length (Ft) 25'
 Standard Color red with a silver liner
 Temperature Range -40° to 750°



- Double-ply construction wire inserted fiberglass fabric hose with a heat-resistant fiberglass liner mechanically crimped in a continuous-process
- Fabric is locked around a coated steel wire by a metal strip formed into a clip
- Metal strip acts as a wearstrip & offers outstanding external abrasion resistance
- Excellent heat stability
- Good flexibility, durability & flow characteristics
- Inserted wire fabric & fiberglass liner increases tensile strength for a longer life cycle
- Excellent for reel & drop systems
- Ideal for high temperature diesel exhaust applications



Flex-Lok® 1200



Size Range (In) 4" to 18"
 custom to 20"
 Standard Length (Ft) 25'
 Standard Color red
 Temperature Range (°F) -40° to 1200°



- Double-ply wire inserted fiberglass fabric hose mechanically crimped in a continuous process
- Fabric is locked around a coated steel wire by a metal strip formed into a clip
- Metal strip acts as a wearstrip & offers outstanding external abrasion resistance
- Extreme temperature resistance with excellent heat stability
- Good flexibility & flow characteristics
- Inserted wire fabric increases tensile strength for a longer life cycle
- Excellent for reel & drop systems
- Ideal for applications where extreme temperatures are a factor



Bendway® Plus



Size Range (In) 3" to 12"
 Standard Length (Ft) 25' (3"-8"), 15' (9"-12")
 Standard Color silver
 Temperature Range (°F) up to 1650°



- Manufactured using 316Ti Stainless Steel in a patented roll lock construction
- Durable corrugations allow product to be dragged, bent & reshaped numerous times without damage or breaking
- Suitable for fume & air exhaust applications with extremely high temperatures
- Very flexible
- Titanium stabilized 316 stainless alloy for superior high temperature corrosion resistance
- Suitable for chemical fume exhausting, high temperature & corrosive applications where both positive & negative pressures are involved
- 25' coils can ship via UPS in 3" to 4" diameters
- Wall thickness = .006"



Bendway® S



Size Range (In) 2" to 12"
 Standard Length (Ft) 5', 10'
 Standard Color silver
 Temperature Range (°F) -400° to 800°



- Single-ply helically corrugated stainless steel alloy hose with a 4-ply finished seam that is folded flat & crimped for tightness & strength
- Light weight & hand bendable allowing for elbows & turns to be formed easily during installation
- Self-support construction allows for bends to stay in place
- Resists metal fatigue, weathering & most corrosive fumes & chemicals
- Not recommended for continuous flexing
- Hose connectors available
- Wall thickness = .005"



Bendway® A



Size Range (In) 2" to 12"
 Standard Length (Ft) 5', 10'
 Standard Color silver
 Temperature Range (°F) -100° to 400°



- Single-ply helically corrugated aluminum alloy hose with a four-ply finished seam that is folded flat & crimped for tightness & strength
- Light weight & hand bendable allowing for elbows & turns to be formed easily during installation
- Self-supporting construction allows for bends to stay in place
- Resists metal fatigue, weathering & most corrosive fumes & chemicals
- Not recommended for continuous flexing
- Hose connectors available
- Wall thickness = .008"



Bendway® Packaging

Bendway® Aluminum & Stainless Steel Shipping Information:

- Each length packed in individual tube. (Suggested to reship from your stock.) Priced at list per foot with added net tube charge per length as stated.
- All Bendway® Aluminum & Stainless Steel must ship freight collect.
- Consult us for specific packaging & freight requirements.

Minimum Standard Box Quantities:

Size	Lengths Per Box	Feet Per Box
2"	100	1000
3"	48	480
4"	30	300
5"	16	160
6"	12	120
7"	9	90
8"	6	60
10"	4	40
12"	3	30

SPECIAL APPLICATIONS

Custom-made hose, consult sales team for prices and minimums.

A
AIR

F
FUME

D
DUST

M
MATERIAL

CW-162



Size Range (In) 1.5" to 12"
Standard Length (Ft) 25'
Standard Color black
Temperature Range (°F) -40° to 250°

A **F**

- Single-ply neoprene coated polyester fabric hose reinforced with a spring steel wire helix
- Recommended for light duty, low pressure applications
- Meets Department of Transportation standards for flame spread & smoke generation when tested to ASTM E162 & E662
- Conforms to Bombardier SMP 800-C requirements as they pertain to toxic gas production
- Neoprene coating offers excellent abrasion & chemical resistance
- Designed for applications with wide temperature ranges



Confined Space Fume & Smoke Removal

E-2



Size Range (In) 4", 6"
Standard Length (Ft) 25'
Standard Color clear
Temperature Range (°F) -40° to 150°

M

- Lightweight polyethylene hose reinforced with a spring steel wire helix
- Great flexibility & lightweight for easy handling
- Ideal vacuum hose for insulation removal
- Clear wall offers easy monitoring of material flow & blockage
- Chemical & gouge resistance
- Good compressibility
- Resistant to microbial attack



Insulation Removal

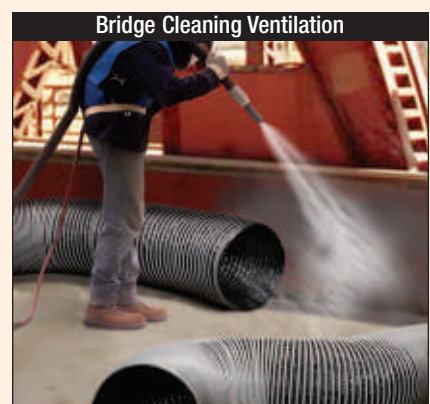
FSP Bridge



Size Range (In) 12" to 24"
Standard Length (Ft) 25'
Standard Color ... black with gray wearstrip
Temperature Range (°F) -20° to 180°

D **M**

- Double-ply PVC vinyl coated polyester fabric hose reinforced with a spring steel wire helix & external PVC wearstrip
- Wearstrip offers additional external abrasion & drag resistance
- Great moisture, mildew, & chemical resistance
- Low friction loss
- Other wearstrip colors available
- Manufactured with flame retardant materials



Bridge Cleaning Ventilation

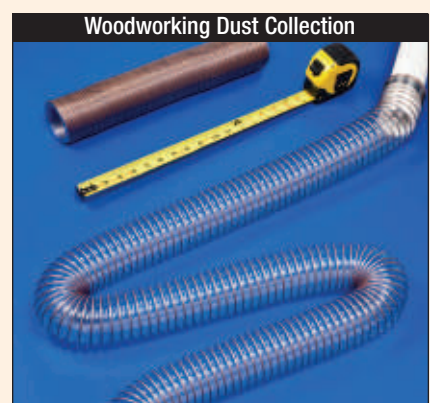
R-4 Stretch



Size Range (In) 2.5" to 6"
Standard Length (Ft) 3' compressed
Standard Color clear
Temperature Range (°F) 20° to 160°

D **M**

- Medium weight PVC hose reinforced with a spring steel wire helix
- Good for positive pressure & vacuum applications
- Ideal for woodworking applications
- Chemical & moisture resistant
- Hose stretches & retracts for convenience of use
- 6:1 compressibility



Woodworking Dust Collection

Flare-Lok®



Size Range (In) 2" to 4"
 Standard Length (Ft) 11'
 Standard Color black
 Temperature Range (°F) up to 375°

- Light weight rubber hose
- Resistant to heat, aging, gasoline, oil & fumes
- No wire or metal; even when flattened 100%, the hose immediately returns to its original shape
- Ideal for carbon monoxide exhaust applications, small cars & small trucks
- Flared end on each hose allows for connection to multiple lengths of the same size hose
- Easily spliced, connected & re-connected as needed



F

ACT



Size Range (In) 5", 6"
 Standard Length (Ft) 11'
 Standard Color black
 Temperature Range (°F) up to 375°

- Light weight wire-reinforced rubber hose
- Resistant to heat, aging, gasoline, oil & fumes
- Wire insert prevents kinking
- Ideal for carbon monoxide exhaust applications, diesel & gasoline trucks



F

Dyno Hose



Size Range (In) 4"
 Standard Length (Ft) 11'
 Standard Color gray
 Temperature Range (°F) up to 450°

- Special rubber blend to withstand the high temperature of a dynamometer when used with a fan assisted system
- Heavy wall thickness increases durability
- Designed to be used in IM240 & VMAS emission testing



F

Accessories

Garage Exhaust Accessories



Aluminum Door Port



Aluminum Pulley Elbow



Aluminum Splice Connector



Aluminum Y Connector



Tail Pipe Adapter



Rubber Door Port



Twin Oval Adapter



Rubber Y Connector

APPLICATION GUIDE

MARKET	APPLICATION	PRODUCTS
Agricultural	Seeder Hoses, Cotton, Tobacco	Flx-Thane MD, Flx-Thane HD, Commercial, Flx-Thane VHD, Mark 2
Air Duct Cleaning	Duct Cleaning	R-2 Clear, ADC, CWC-W, Commercial, FSP-2
Aircraft	Ground Support Duct	CWGS, GS, Flex-Lok 1050, Flex-Lok 600, SD-W, AWP-W
Automotive	A/C Units, Defroster Duct	CW-325, GS, NS, Flex-Lok 550, Flex-Lok 1050
Brake Ducting	Brake Cooling	BDS, GS, GN, Raceflex
Bridge Cleaning Filtering	Dust Control	Flx-Thane MD, Flx-Thane HD, CWC-W, FSP Bridge
Car Wash	Dryer Duct, Vacuum Hose	T-7W, CWGP, Commercial, Flx Plus, DPZ
Carpet Cleaning	Vacuum Hose	Commercial, STM
Chemical Plants	Fume Control	Flex-Lok HP, Flex-Lok 1050, Bendway Plus, T-7, Flex-Lok TCF
Clean Rooms	Ventilation	R-2 Clear, Flx-Thane SD, Mark 2, FlexStat CR, T-7 White
Concrete Transport	Dust Control	Flx-Thane MD, Flx-Thane HD, Flx-Thane VHD
Conduit	Cable Covers & Protectors	Uni-Loop, Commercial, Clutter Keeper
Cotton Picking	Harvesting, Vacuum	Flx-Thane MD, Flx-Thane HD, T-7SR, Flex-Tube PU
Defroster/Heater	Heat, Defroster Duct	XLT, GS, GN, DFD-T
Diesel/Engine Exhaust	High Temperature Exhaust	CW-325, GN, Flex-Lok 550, Flex-Lok 1050, Bendway Plus, Flex-Lok 600, Flex-Lok TCF, Flex-Lok 700, Flex-Lok 1200
Dry Cleaning	Fume Control	LT, CW-325, BDS, GS, Flex-Tube TR
Dust Collection	Dust Control	R-4, Flx-Thane LD, Flx-Thane MD, Flx-Thane SD, T-7, Flex-Tube EF, Flx-Thane LD-SD
Exhaust Systems	Carbon Monoxide Removal	CW-325, Flex-Lok 550, Flex-Lok 1050, Flex-Lok 600, Flex-Lok 570, Flex-Lok TCF, Flex-Lok 750
Fireplace Inserts	High Temperature Exhaust	Bendway S, Bendway Plus
Foundries	Dust & Fume Control, Ventilation	GS, Flex-Vest, Flex-Lok 550, Flex-Lok 1050, Bendway Plus
Garage Exhaust	Fume Control, High Temperature Exhaust	CW-325, GS, NS, Flex-Lok 550, Flex-Lok 600, Flex-Lok TCF, Flex-Lok 300
Humidity Control	Dehumidification, Humidity Control	FSP-5, SD-W, AWP-W
HVAC	A/C, Heat, Ventilation	Bendway S, Bendway Plus, FSP-5, Arctic Duct 3, Arctic Duct U, Flex-Lok PVG
Industrial Vacuum Cleaners	Vacuum Hose	MG-U, Commercial, StatPath®, StatPath® Plus, Flx Plus, FlexStat, Flex-Tube PV, Flex-Tube PU, Flex-Tube TR
Insulation Blowing	Insulation Blowing & Removal	Mark 2, Flx Plus, Flx-Thane LD, E-2
Landscaping	Mulch Blowing	Flex-Tube PU
Lav Waste Disposal	Lav Disposal	Flx-Thane MD, FSP-2, Flex-Tube PU
Lawn & Leaf Collection	Grass & Leaf Collection	HT-W, Flx-Thane HD, Flx-Thane VHD, Flex-Tube PU, Flex-Tube PV, LCDC
Marine Sanitation	A/C, Bilge Pumping & Ventilation, Heat	Commercial, STM, Tiger Tail, Flex-Tube TR
Mining	Ventilation	CWGP, FSP-5, SD-W, AWP-W
Paint Spray Extraction	Fume Control, Ventilation	T-7, Flx-Thane LD, Flx-Thane MD, Flx-Thane SD, FSP-1
Paper Mills	Drying, Fume & Moisture Control	CW-325, GS, Flex-Lok 1050, Flx-Thane HD, Flx-Thane VHD, Flex-Lok 750, Flex-Lok 1200
Peat Moss Vacuum	Vacuum Hose	HT, Flx-Thane MD, Flx-Thane HD, Flex-Tube PU
Pet Grooming Equipment	Vacuum Hose	MG-V, Uni-Loop, Commercial, Flx Plus, R-2, XLT, DPZ
Pharmaceutical	Fume Ventilation	R-2 Clear, R-3 Clear, Flx-Thane LD, White, Flex-Tube PV, FlexStat CR, T-7 White
Plastic Pellet Transfer	Pellet Conveying	Flx-Thane HD, FlexStat, FlexStat CR
Pollution Control	Dust & Fume Control	R-2 Blue, T-7, CW-325, Flex-Lok 550, Pliaduct, Flex-Tube EF
Powder Processing	Static Build-Up	FlexStat, FlexStat CR, FlexStat 60, Flx-Thane SD
Pumper	Water & Waste Discharge	Commercial, STM, Tiger Tail
R.V. Manufacturing	A/C & Defroster Duct, Lav Disposal	R-2 Blue, T-7, DFD-T, Uni-Loop, Saniflex
Racecar Helmet Ventilation	Fresh Air Intake	MG-V, LT, DFD-T
Residential Vacuum Cleaners	Vacuum Hose	Uni-Loop, Commercial, ULT, MG-V
Sand Blasting	Dust Control	Flx-Thane MD, Flx-Thane HD, Flx-Thane SD, CWC-W, FSP Bridge
Sand & Gravel Suction	Dust Control, Vacuum Hose	R-3 Blue, R-3 Clear, HT, Flx-Thane HD, Flex-Tube PU 60
Sewer & Waste	Water & Waste Discharge	Commercial, STM, Tiger Tail, Tiger Tail Sewer Guide
Sheet Metal	Dust & Fume Control	T-7, Flx-Thane LD, Flx-Thane MD, CWGP, FSP-2
Shipyards	Air & Fume Control, Dehumidification	R-3 Blue, CWGP, CWS, FSP-2, Flx-Thane SE, Flex-Tube PP-FR
Street & Parking Lot Sweepers	Vacuum Hose	HT, Flx-Thane MD, Flx-Thane HD, CWY, Flx-Thane VHD
Suction	Water & Waste Discharge	R-3 Clear, Flx-Thane MD, Commercial, Tiger Tail
Textile Fiber Collection	Dust & Lint Control	R-2 Blue, XLT, Flx-Thane LD, FSP-1, Flex-Tube TR
Vapor Recovery	Fume Control	Flx-Thane LD, Flx-Thane MD, MG-U, Flx-Thane LD-SD
Vehicle Exhaust Systems	Exhaust, Fume Control	CW-325, GS, NS, Flex-Lok 550, CW 325-W, Flex-Lok 600, Flex-Lok 750, Flex-Lok TCF, Flex-Lok 1200
Welding Fume Extraction	Fume Exhaust	R-2 Blue, FSP-1, CW-325, Flex-Lok 550, Flex-Lok 1050, Flx-Thane SE, CW 325-W, Flex-Lok 570, Flex-Lok 300
Woodworking/Furniture Industries	Dust & Chip Control	R-4, Flx-Thane LD, Flx-Thane MD, Flx-Thane HD, Flx-Thane SD, FlexStat, Flex-Tube PV, Flx-Thane LD-SD



A **SCHAUBURG** HOSE TECHNOLOGY COMPANY

1510 Armstrong Road
Warsaw, IN 46580
Tel: 574-267-7909
Fax: 574-269-7491
sales@flexaust.com
www.flexaust.com

4584 Calimesa Street
Las Vegas, NV 89115

10 Industrial Way
Amesbury, MA 01913

12134 Esther Lama, Suite 300
El Paso, TX 79936

5731 Harvey Wilson Drive
Houston, TX 77020

5110 Fulton Industrial Blvd., Suites D & E
Atlanta, GA 30336

Find Us On:



LinkedIn

DISTRIBUTED BY

